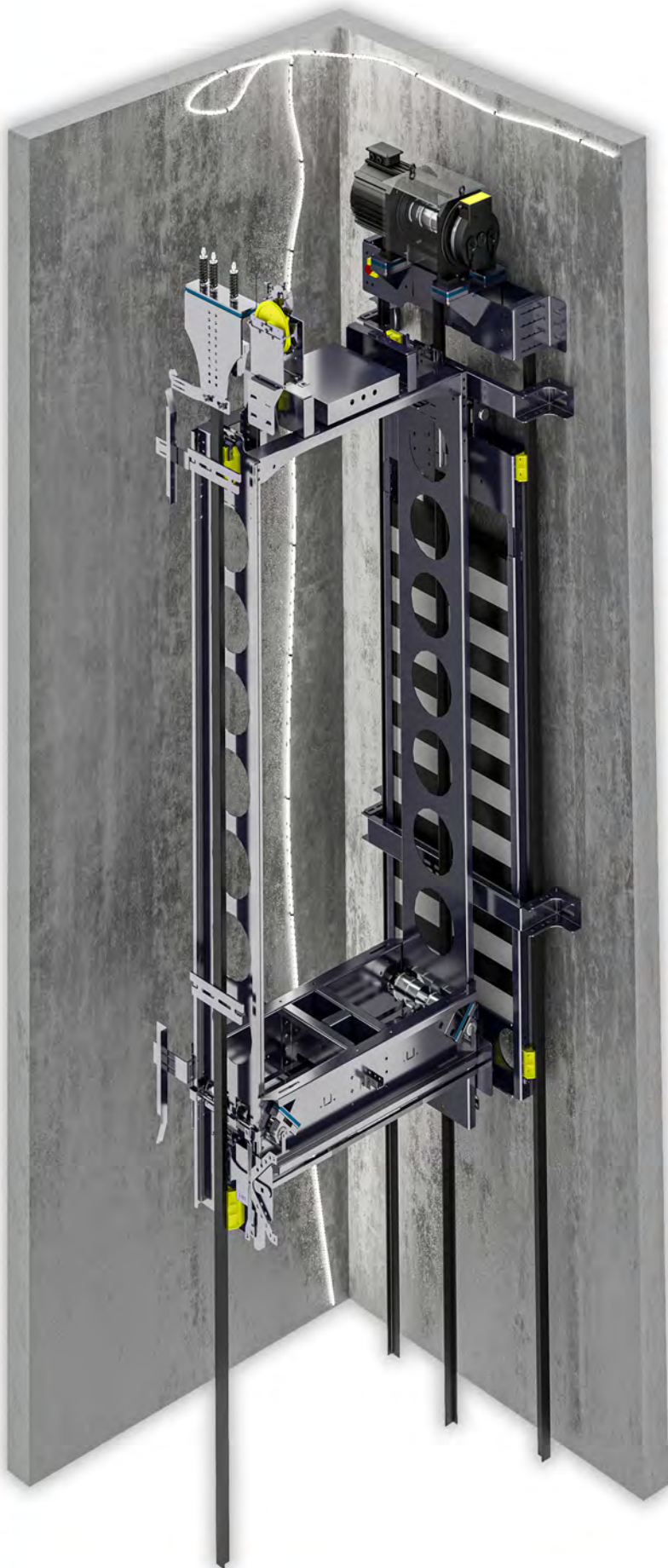


# MODEL 3000

## Features



**Machine roomless**



**Gearless & Belt**



**320-2000 kg**



**1,0 m/s**



**80 m**



**2:1**



**Single or 180 Degree  
Double Entrance**



**G Type Cabin Frame  
Pulleys at Bottom**



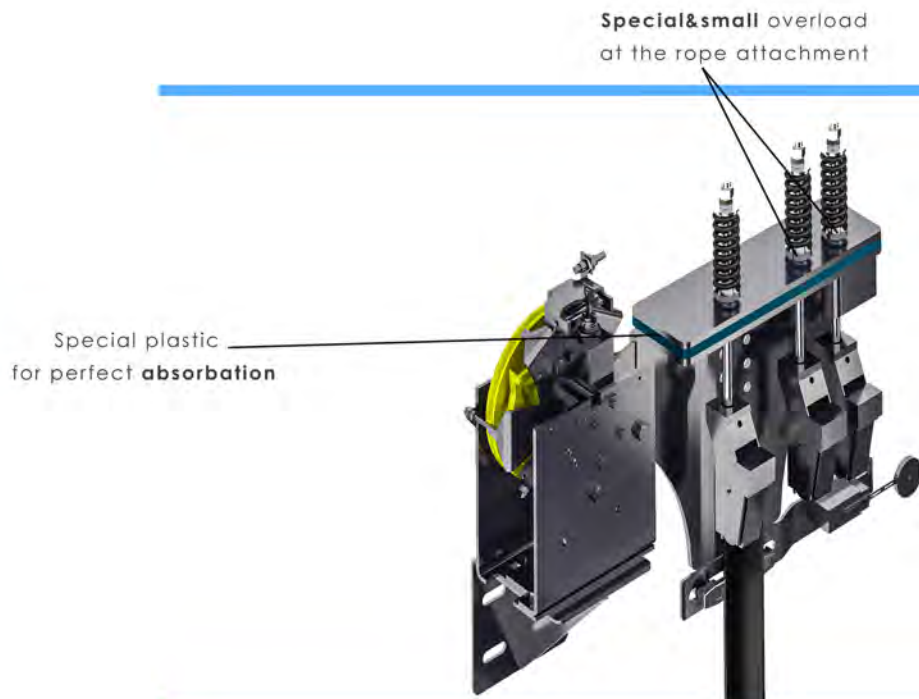
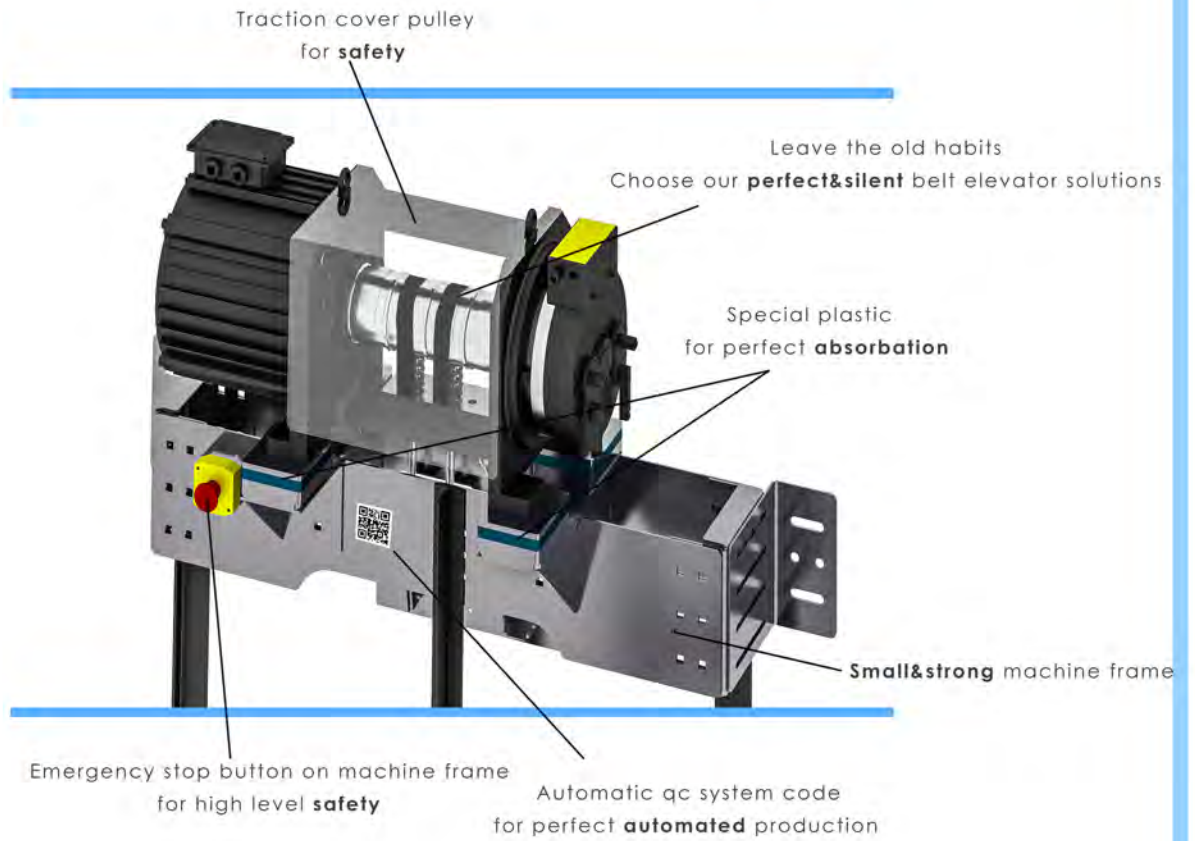
**EN 81-20 / EN 81-50**

**EN 81-21 / EN 81-28**

**EN 81-70**

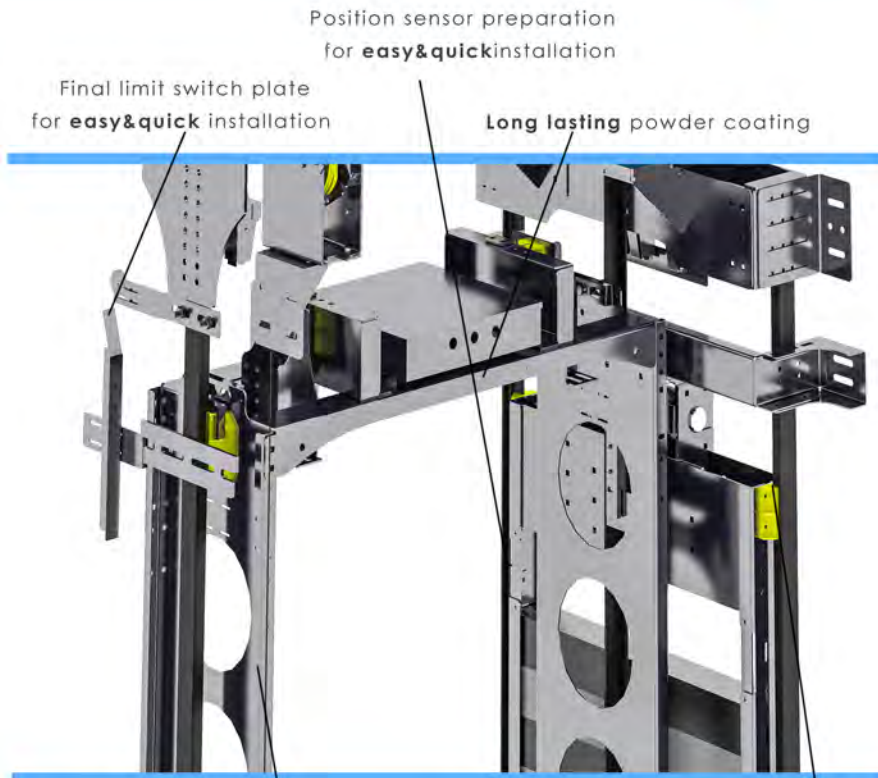
# MODEL 3000

## Features

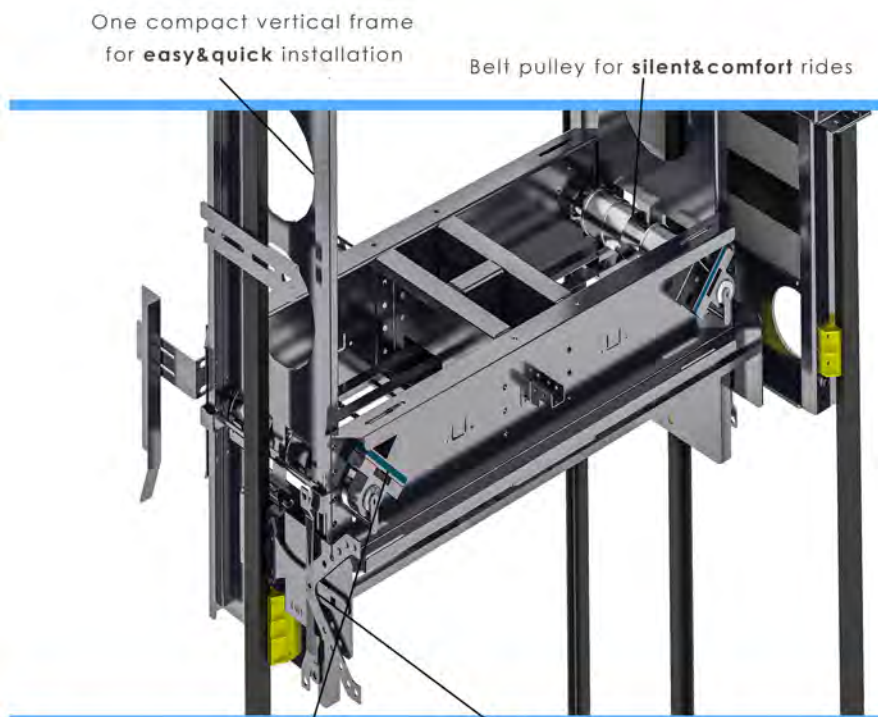


# MODEL 3000

## Features

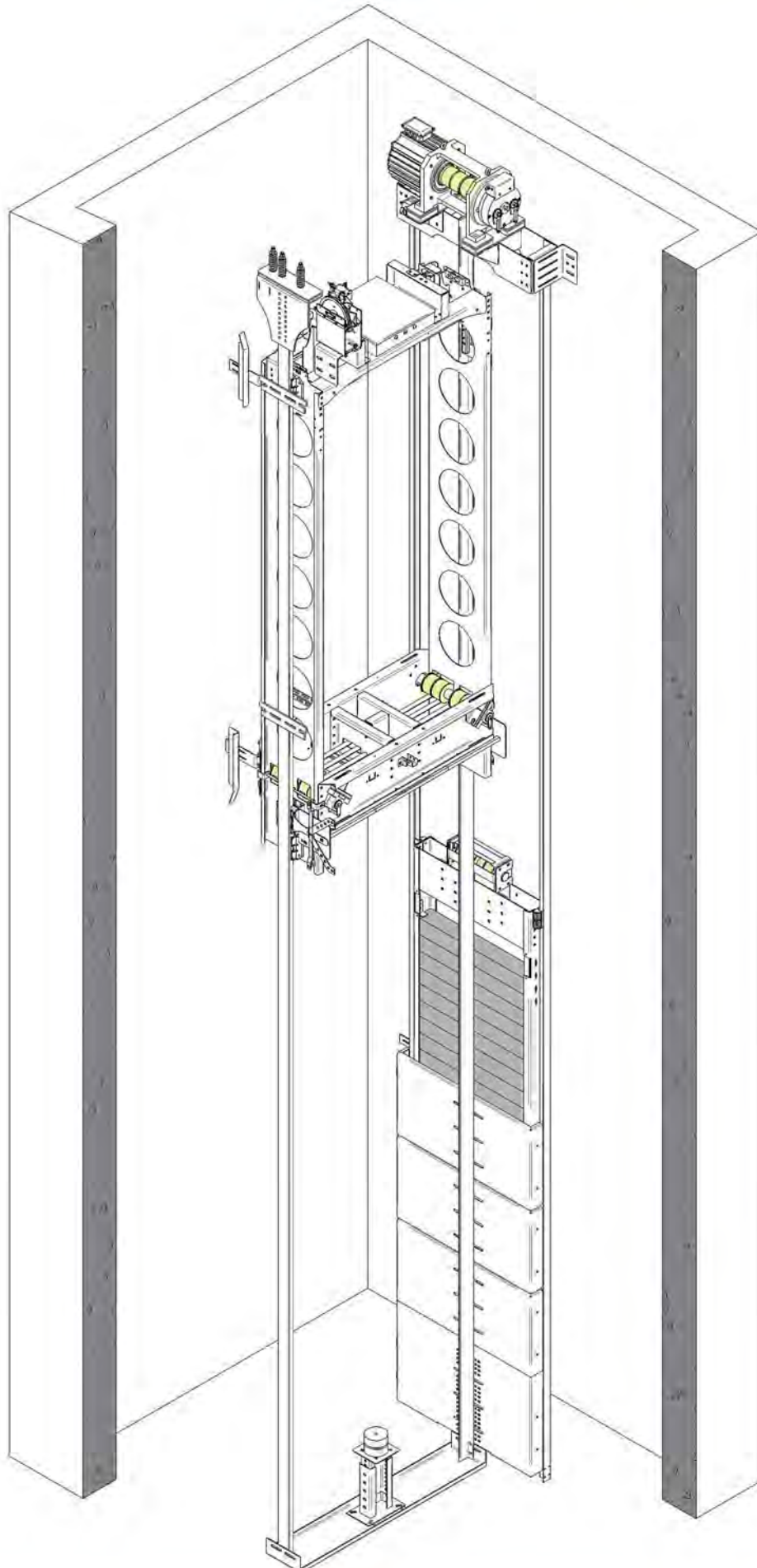


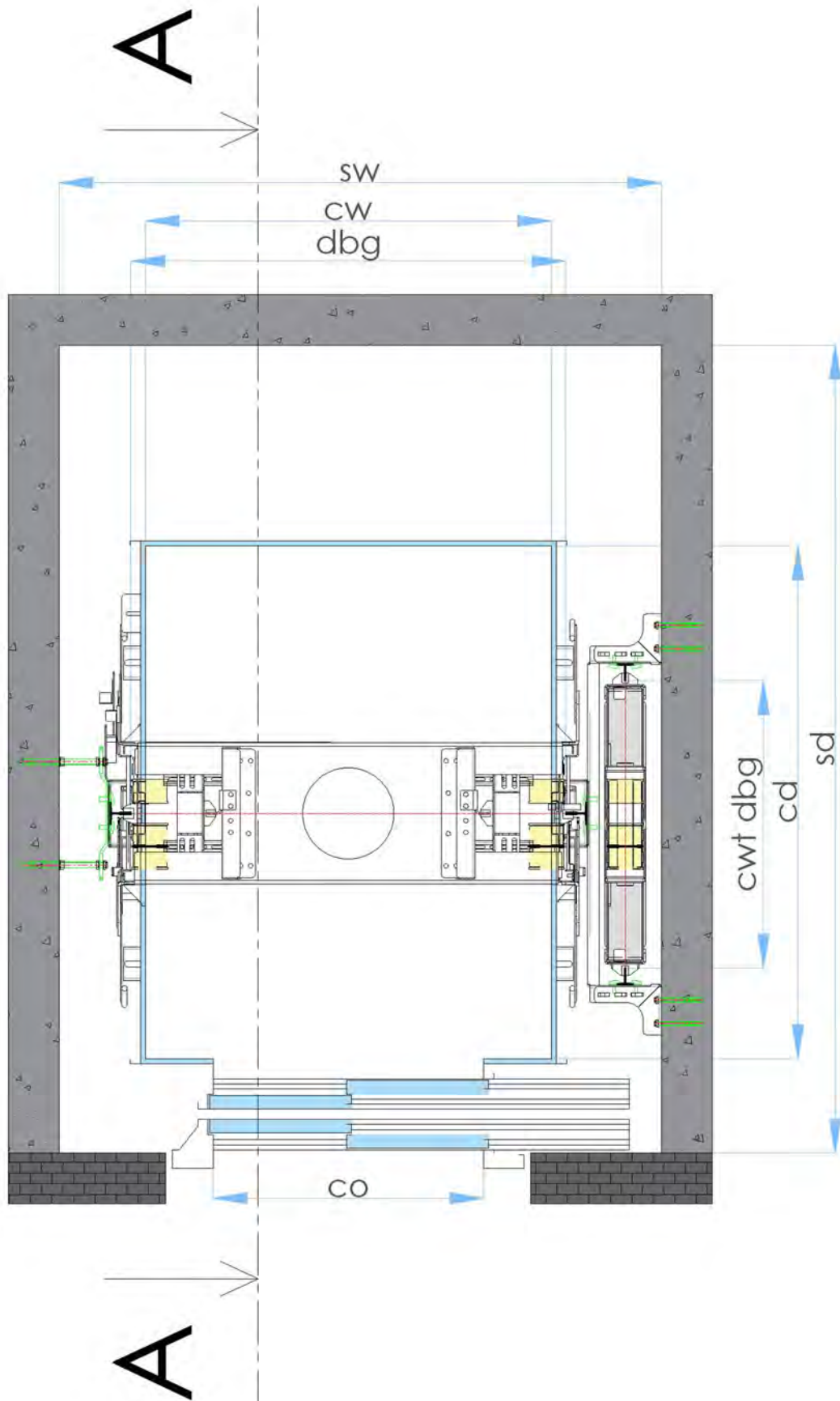
German ETN guide shoes  
No need for lubrication  
Vulkocell padding provides **silence** in every velocity.

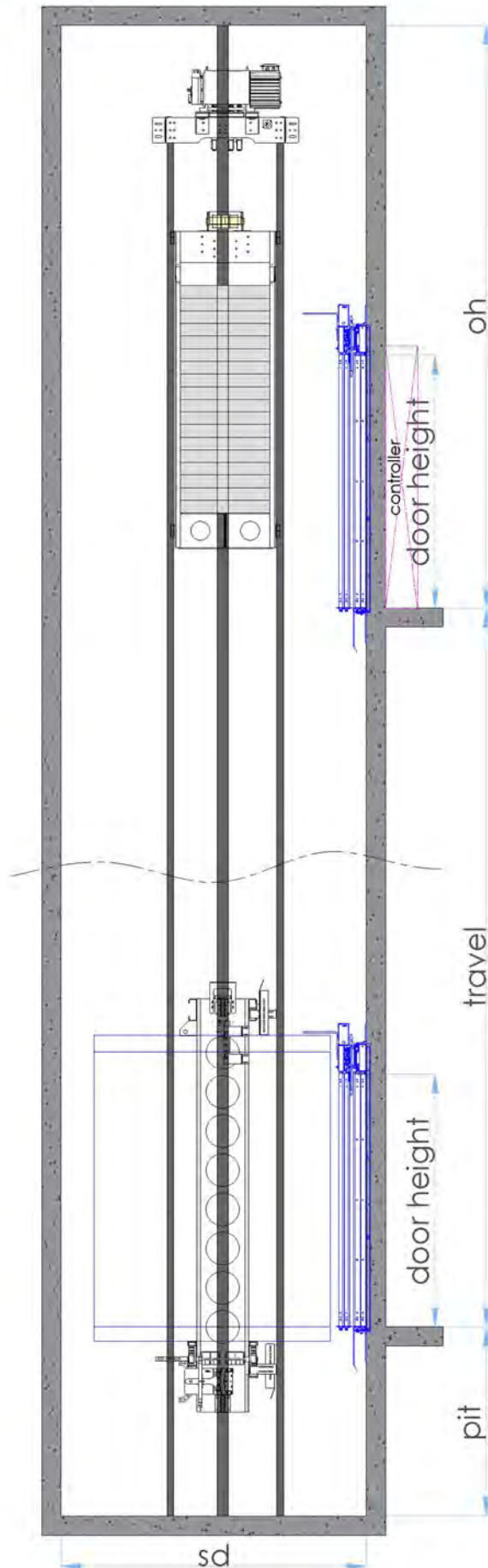


Spanish Dynatech safety gear  
We leave nothing chance on **safety** component

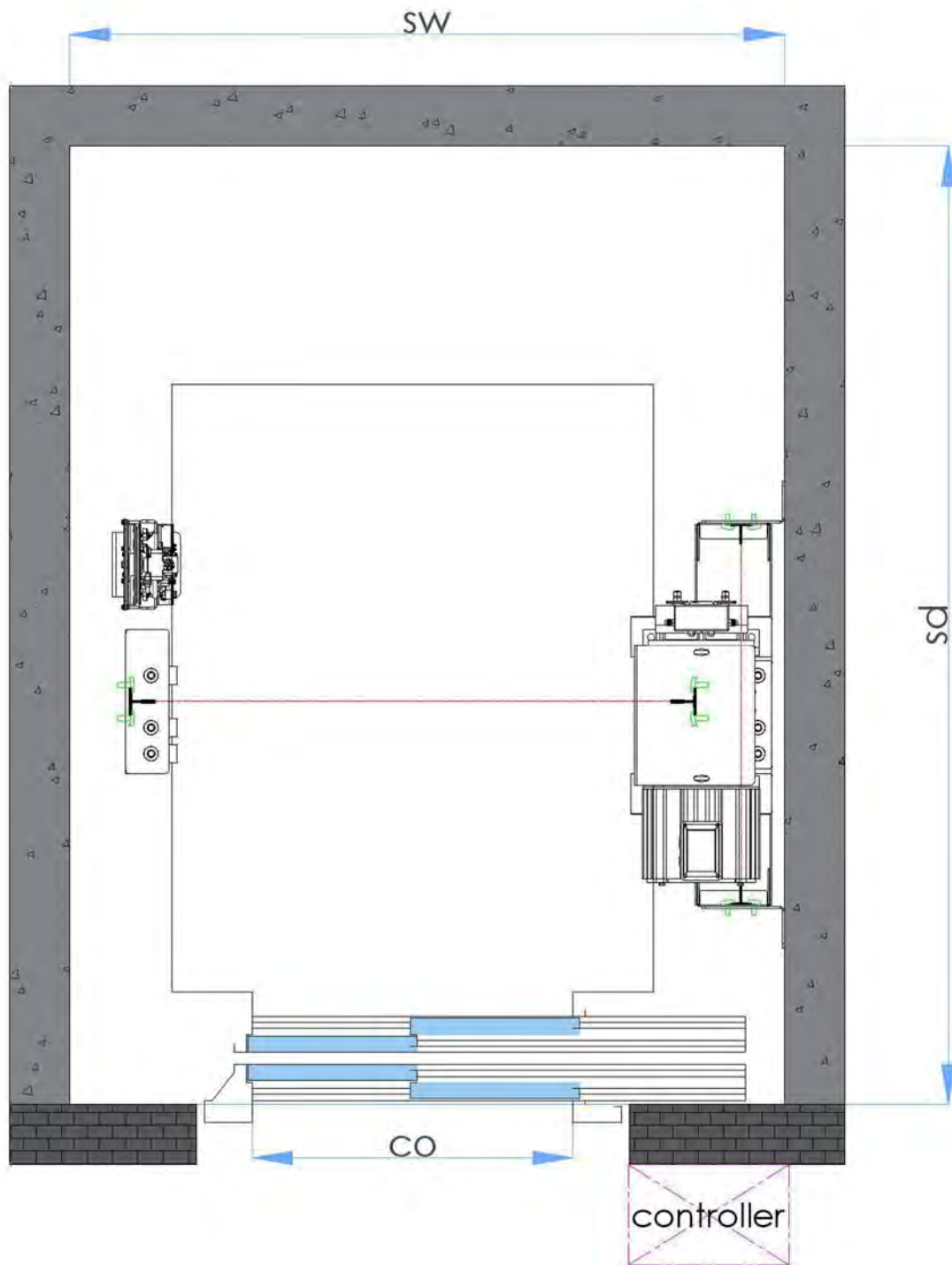








SECTION A-A



capacity	320 kg	400 kg	450 kg	630 kg	800 kg
no of passengers	4	5	6	8	10
roping	2:1	2:1	2:1	2:1	2:1
total load, P+Q [kg]	960	1100	1225	1415	1650
max. car area [m <sup>2</sup> ]	0,9	1,17	1,3	1,66	2
min. car area [m <sup>2</sup> ]	0,79	0,98	1,17	1,45	1,73
shaft width [mm]	1450	1500	1500	1600	1850
shaft depth [mm]	1550	1550	1550	1800	1800
minimum pit depth (mm) EN81-20	1050	1050	1050	1050	1050
minimum headroom (mm) EN81-20	3400	3400	3400	3400	3400
minimum pit depth (mm) EN81-21	620	620	620	620	620
minimum headroom (mm) EN81-21	2800	2800	2800	2800	2800
car width [mm]	900	1000	1000	1100	1350
car depth [mm]	1000	1100	1200	1400	1400
car internal height [mm]	2115	2115	2115	2115	2115
door type	2P side opening	2P side opening	2P side opening	2P side opening	2P side opening
door width [mm]	800	800	800	900	900
door height [mm]	2000	2000	2000	2000	2000
door total length [mm]	1250	1250	1250	1400	1400
car frame DBG [mm]	990	1090	1090	1190	1440
brace rods					



## Motor & Inverter

capacity	320 kg	400 kg	450 kg	630 kg	800 kg
motor model	MB63	MB63	MB63	MB63	MB80
motor power [kW]	3,9	3,9	3,9	3,9	5,1
nominal current [A] for 380V	8	8	8	8	11
inverter model for 380V	14A	14A	14A	14A	14A
motor static load [kg]	2000	2000	2000	2000	2000
traction sheave [mm]	100	100	100	100	100
no of belts	2	2	2	3	3
dia of belts [mm]	30	30	30	30	30
min. breaking load of belts [N]	42000	42000	42000	42000	42000
belt unit weight [kg/m]	0,25	0,25	0,25	0,25	0,25

## Safety Components

capacity	320 kg	400 kg	450 kg	630 kg	800 kg
safety gear model	PRO 2000	PRO 2000	PRO 2000	PRO 2000	PRO 2000
safety gear P+Q [kg]	2400	2400	2400	2400	2400
buffer model	EYL-1	EYL-1	EYL-1	EYL-1	EYL-1
buffer P+Q [kg]	2250	2250	2250	2250	2250
OSG model	MOMENT 250 MRL 100	MOMENT 250 MRL 100	MOMENT 250 MRL 100	MOMENT 250 MRL 100	MOMENT 250 MRL 100
dia of OSG pulley [mm]	250	250	250	250	250
tripping speed [m/s]	1,4	1,4	1,4	1,4	1,4
tension pulley model	MOMENT 250 SPRING	MOMENT 250 SPRING	MOMENT 250 SPRING	MOMENT 250 SPRING	MOMENT 250 SPRING
dia of tension pulley [mm]	230	230	230	230	230
dia of OSG rope [mm]	6	6	6	6	6
OSG rope composition	6*19 Seale	6*19 Seale	6*19 Seale	6*19 Seale	6*19 Seale
Tmin of OSG rope [N]	21300	21300	21300	21300	21300