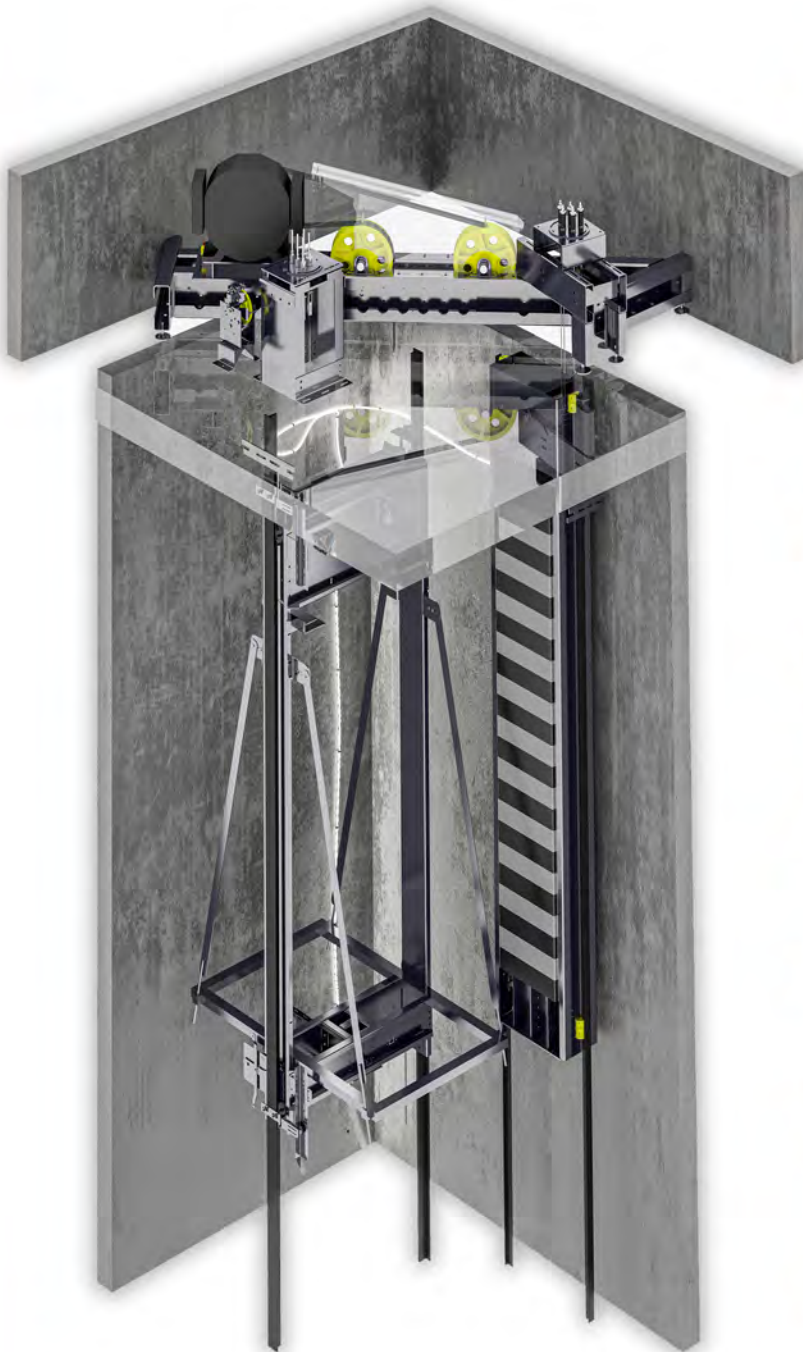


MODEL 5000

Features



Machine Room



Gearless



1000-2000 kg



1,0 - 1,6 m/s



80 m



2:1



**Single or 180 Degree
Double Entrance**



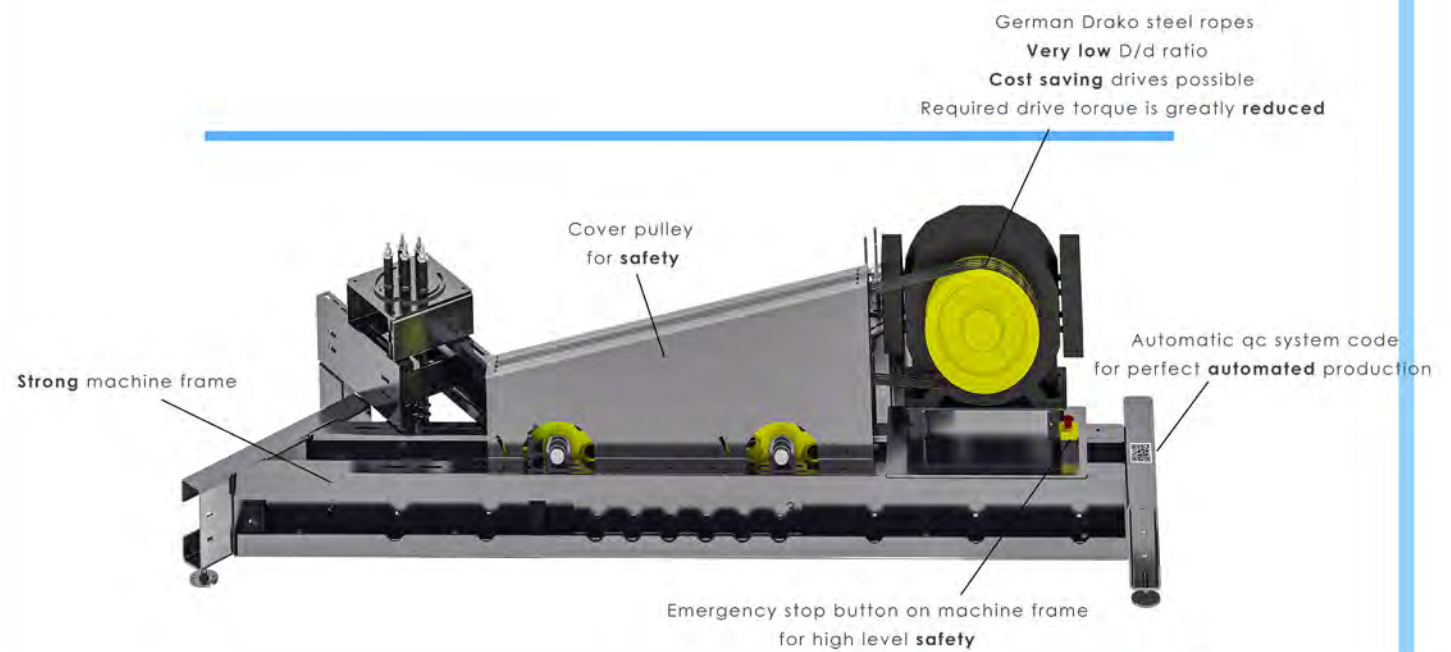
**G Type Cabin Frame
Pulleys At Top**

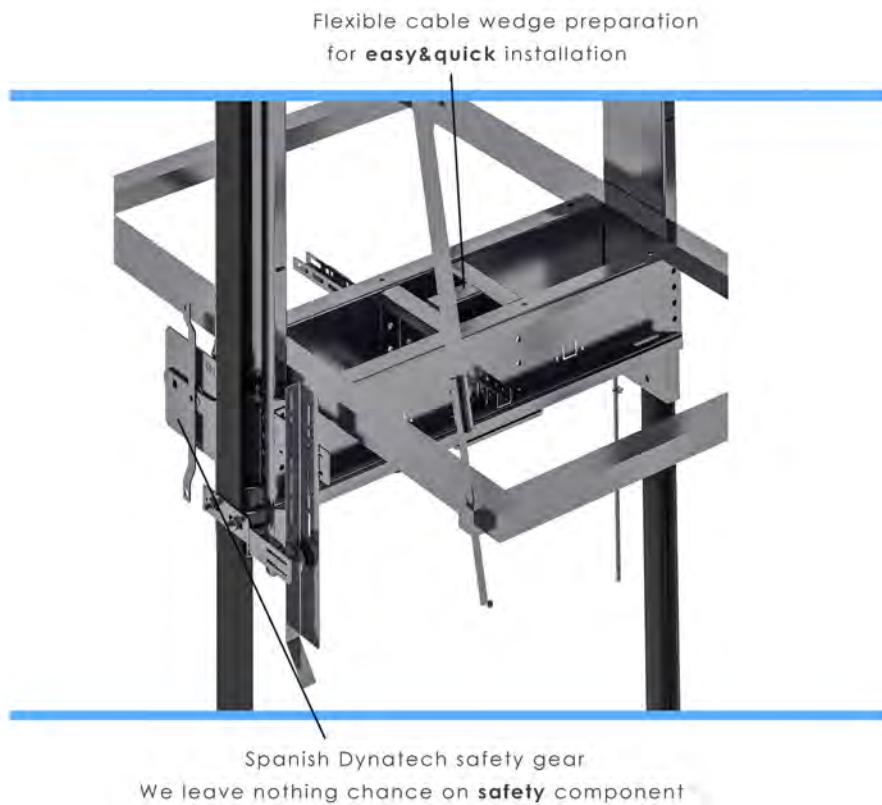
EN 81-20 / EN 81-50

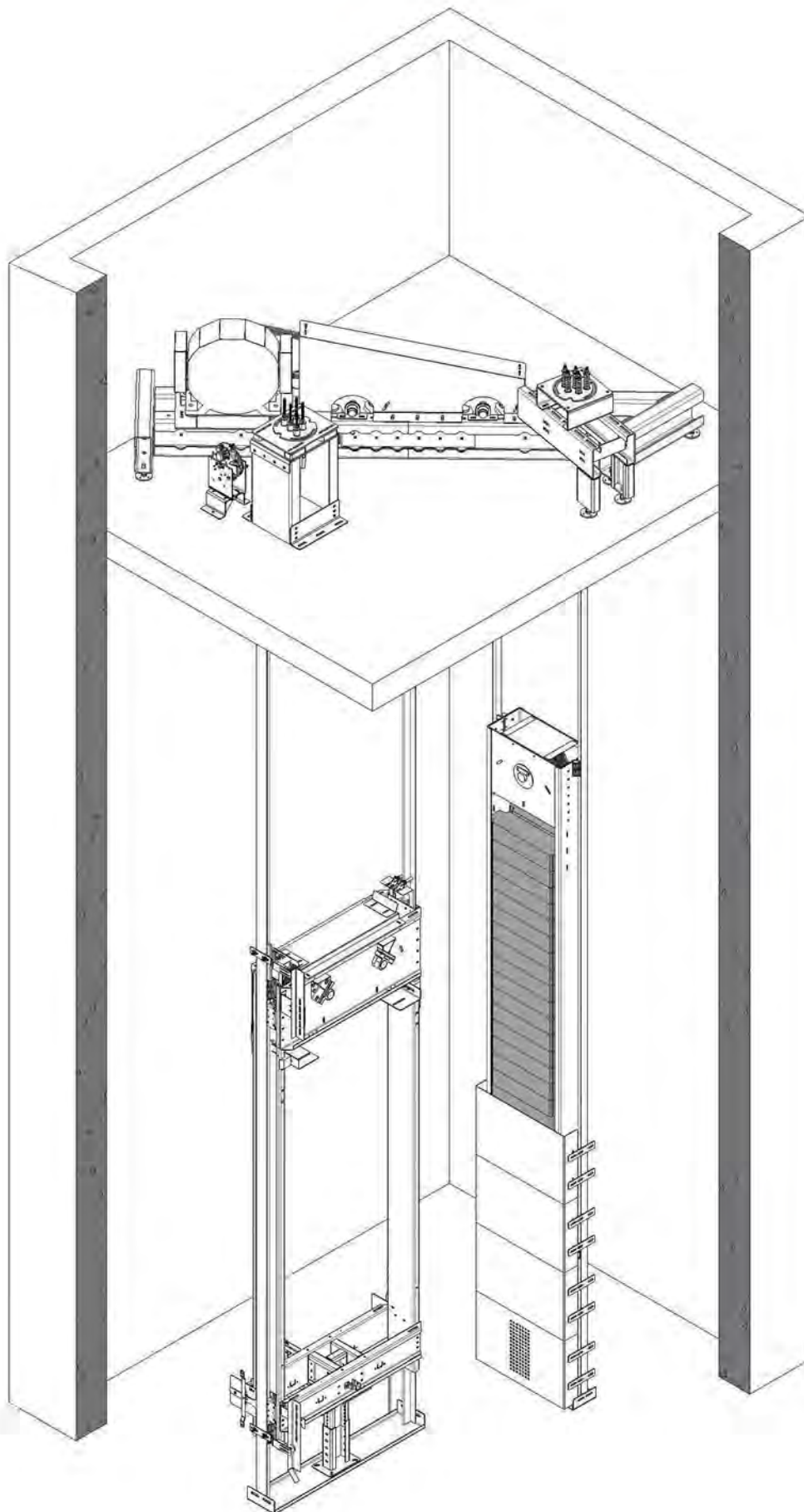


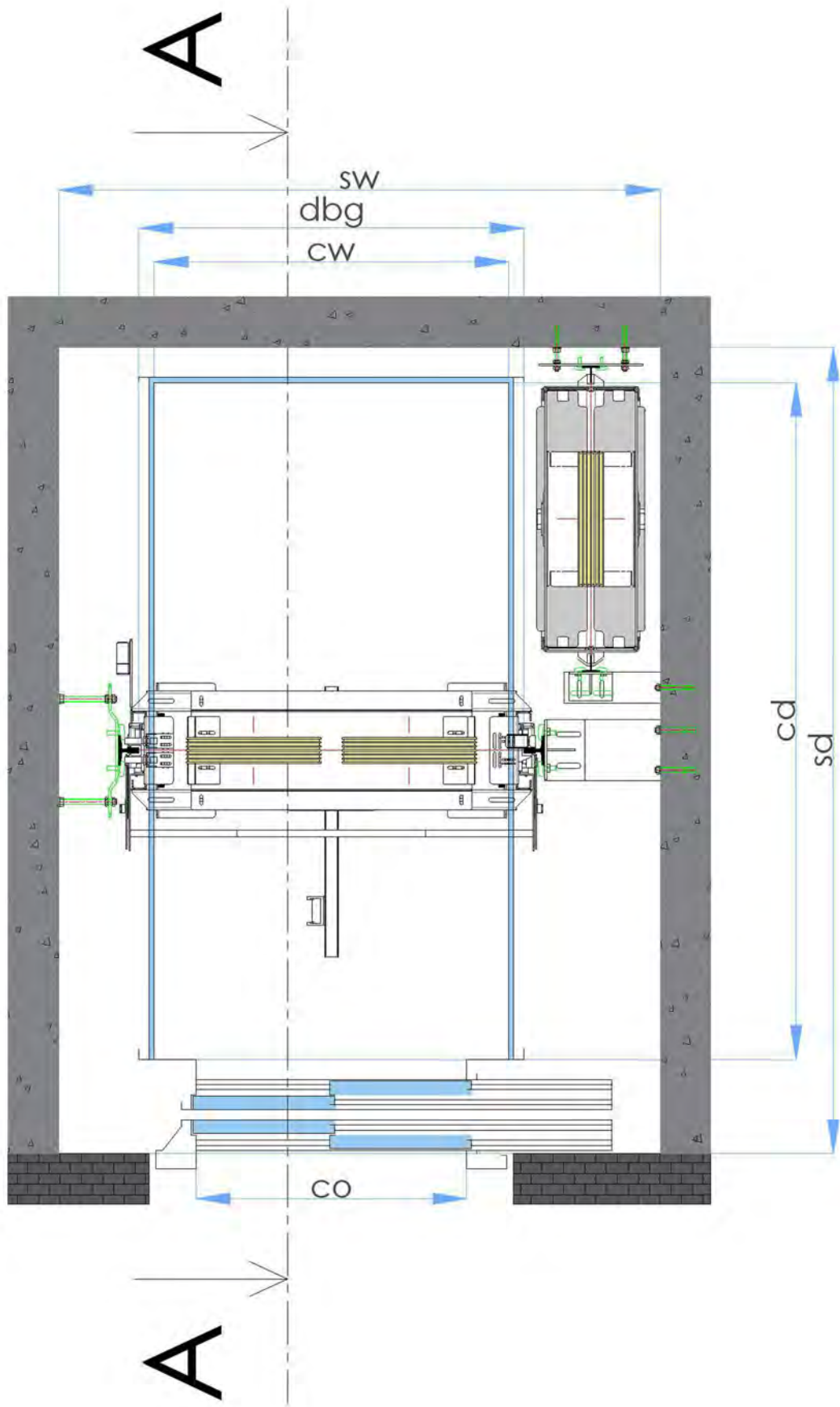
EN 81-21 / EN 81-28

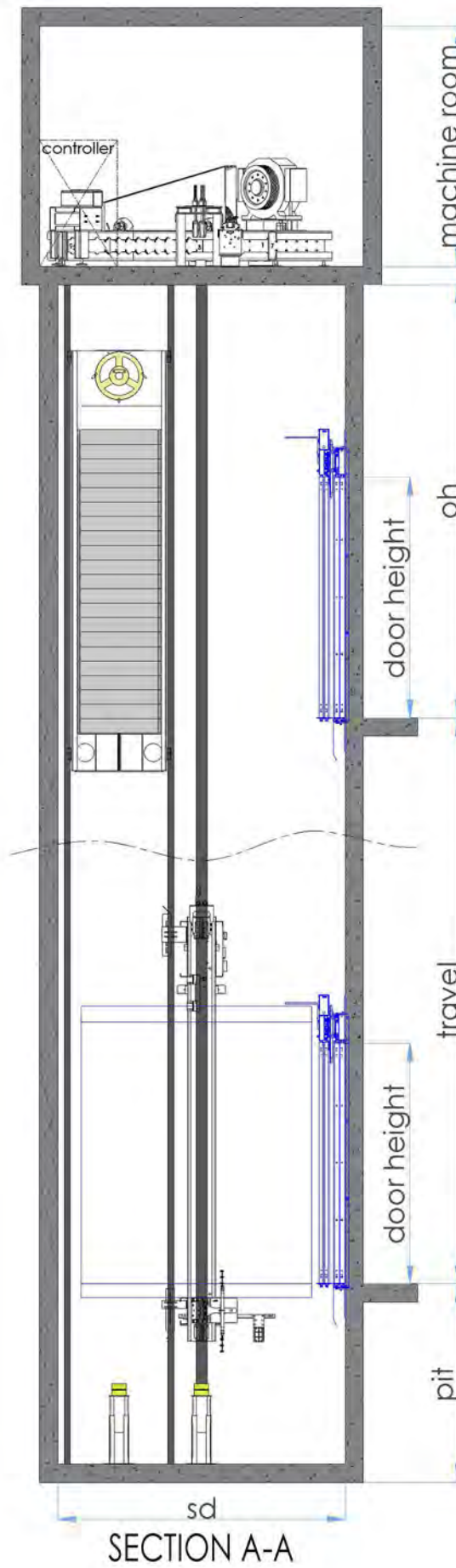
EN 81-70

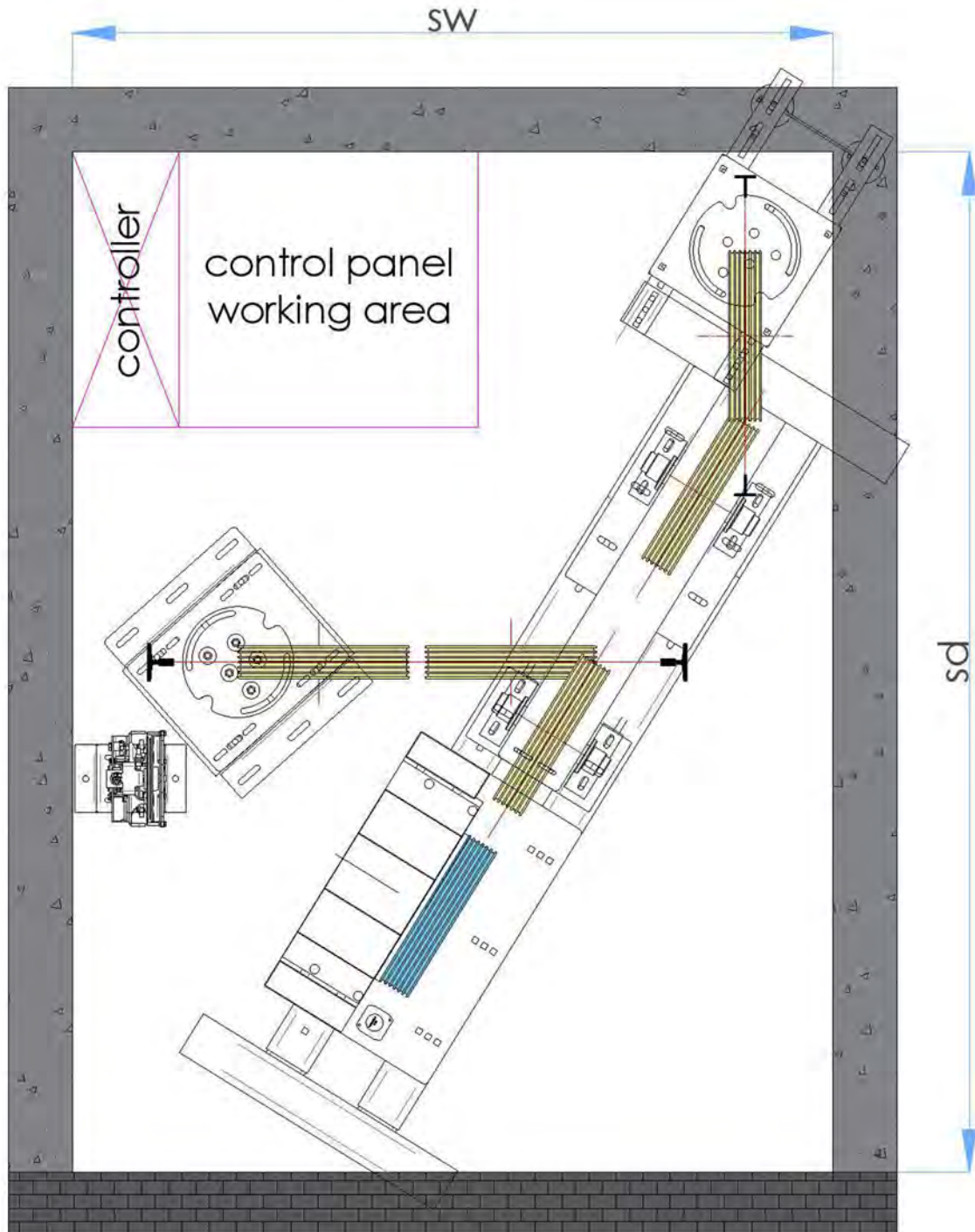












MODEL 5000

Technical Tables
1 m/s

Dimensions

capacity	1000 kg	1275kg	1600kg	2000kg
no of passengers	13	17	20	26
roping	2:1	2:1	2:1	2:1
total load, P+Q [kg]	2000	2325	2750	3500
max. car area [m ²]	2,4	2,9	3,56	4,2
min. car area [m ²]	2,15	2,57	3,13	3,705
shaft width [mm]	1900	2200	2400	2500
shaft depth [mm]	2000	2400	2500	2750
minimum pit depth (mm) EN81-20	1050	1050	1050	1050
minimum headroom (mm) EN81-20	3400	3500	3500	3500
minimum pit depth (mm) EN81-21	750	750	750	750
minimum headroom (mm) EN81-21	3200	3300	3300	3300
car width [mm]	1400	1400	1600	1700
car depth [mm]	1600	2000	2100	2350
car internal height [mm]	2115	2215	2215	2215
door type	2P side opening	2P side opening	2P side opening	2P side opening
door width [mm]	900	1100	1300	1300
door height [mm]	2000	2100	2100	2100
door total length [mm]	1400	1700	2000	2000
car frame DBG [mm]	1490	1490	1690	1790
brace rods		available	available	available

Motor & Inverter

capacity	1000 kg	1275kg	1600kg	2000kg
motor model	AKD1	AKD2	AKD2	AKD3
motor power [kW]	6,1	7,8	9,8	12,2
nominal current [A] for 380V	17,3	22,1	27,7	34,7
inverter model for 380V	17 A	26 A	35 A	35 A
motor static load [kg]	7000	7000	7000	7000
traction sheave [mm]	400	400	400	400
no of ropes	5	6	8	11
dia of ropes [mm]	10	10	10	10
rope composition	8*19 Warrington	8*19 Warrington	8*19 Warrington	8*19 Warrington
min. breaking load of ropes [N]	67700	67700	67700	67700
rope unit weight [kg/m]	0,423	0,423	0,423	0,423

Safety Components

capacity	1000 kg	1275kg	1600kg	2000kg
safety gear model	PRO 2000	PRO 2000	PRO 2000S	PRO 2000S
safety gear P+Q [kg]	2400	2400	4000	4000
buffer model	EYL-1	EYL-1x2	EYL-1x2	EYL-1x2
buffer P+Q [kg]	2250	2250	2250	2250
OSG model	MOMENT 250 MR	MOMENT 250 MR	MOMENT 250 MR	MOMENT 250 MR
dia of OSG pulley [mm]	250	250	250	250
tripping speed [m/s]	1,4	1,4	1,4	1,4
tension pulley model	MOMENT 250 SPRING	MOMENT 250 SPRING	MOMENT 250 SPRING	MOMENT 250 SPRING
dia of tension pulley [mm]	230	230	230	230
dia of OSG rope [mm]	6	6	6	6
OSG rope composition	6*19 Seale	6*19 Seale	6*19 Seale	6*19 Seale
Tmin of OSG rope [N]	21300	21300	21300	21300

MODEL 5000

Technical Tables
1.6 m/s

Dimensions

capacity	1000 kg	1275kg	1600kg	2000kg
no of passengers	13	17	20	26
roping	2:1	2:1	2:1	2:1
total load, P+Q [kg]	2000	2325	2750	3500
max. car area [m ²]	2,4	2,9	3,56	4,2
min. car area [m ²]	2,15	2,57	3,13	3,705
shaft width [mm]	1900	2200	2400	2500
shaft depth [mm]	2000	2400	2500	2750
minimum pit depth (mm) EN81-20	1150	1150	1150	1150
minimum headroom (mm) EN81-20	3554,6	3654,6	3654,6	3654,6
minimum pit depth (mm) EN81-21	970	970	970	970
minimum headroom (mm) EN81-21	3400	3500	3500	3500
car width [mm]	1400	1400	1600	1700
car depth [mm]	1600	2000	2100	2350
car internal height [mm]	2115	2215	2215	2215
door type	2P side opening	2P side opening	2P side opening	2P side opening
door width [mm]	900	1100	1300	1300
door height [mm]	2000	2100	2100	2100
door total length [mm]	1400	1700	2000	2000
car frame DBG [mm]	1490	1490	1690	1790
brace rods		available	available	available

Motor & Inverter

capacity	1000 kg	1275kg	1600kg	2000kg
motor model	AKD1	AKD2	AKD3	AKD3
motor power [kW]	9,8	12,5	15,7	19,6
nominal current [A] for 380V	24,5	31,2	39,2	49
inverter model for 380V	26 A	35 A	50 A	50 A
motor static load [kg]	7000	7000	7000	7000
traction sheave [mm]	400	400	485	485
no of ropes	5	7	8	11
día of ropes [mm]	10	10	10	10
rope composition	8*19 Warrington	8*19 Warrington	8*19 Warrington	8*19 Warrington
min. breaking load of ropes [N]	67700	67700	67700	67700
rope unit weight [kg/m]	0,423	0,423	0,423	0,423

Safety Components

capacity	1000 kg	1275kg	1600kg	2000kg
safety gear model	PRO 2000	PRO 2000	PRO 2000S	PRO 2000S
safety gear P+Q [kg]	2400	2400	4000	4000
buffer model	HT16-102	HT16-102x2	HT16-102x2	HT16-102x2
buffer P+Q [kg]	2145	2145	2145	2145
OSG model	MOMENT 250 MR	MOMENT 250 MR	MOMENT 250 MR	MOMENT 250 MR
día of OSG pulley [mm]	250	250	250	250
tripping speed [m/s]	1,4	1,4	1,4	1,4
tension pulley model	MOMENT 250 SPRING	MOMENT 250 SPRING	MOMENT 250 SPRING	MOMENT 250 SPRING
día of tension pulley [mm]	230	230	230	230
día of OSG rope [mm]	6	6	6	6
OSG rope composition	6*19 Seale	6*19 Seale	6*19 Seale	6*19 Seale
Tmin of OSG rope [N]	21300	21300	21300	21300