

MODEL 1000

Features



Machine Roomless



Gearless



320-3500 kg



1,0 - 2,5 m/s



80 m



2:1



**Single or 180°
Double Entrance**



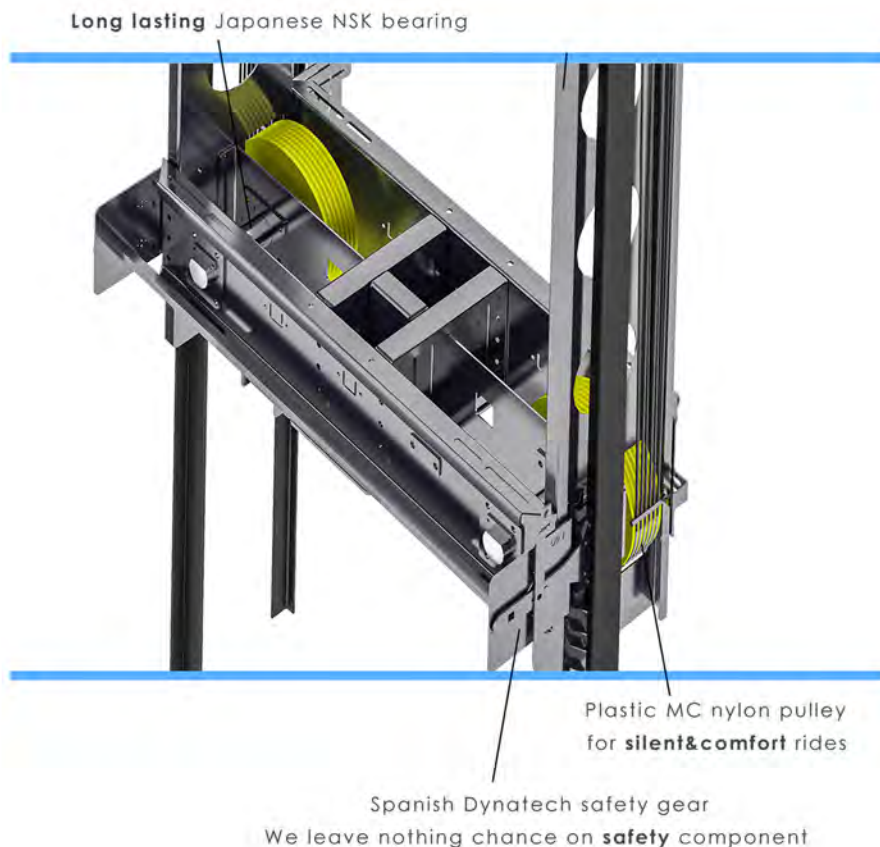
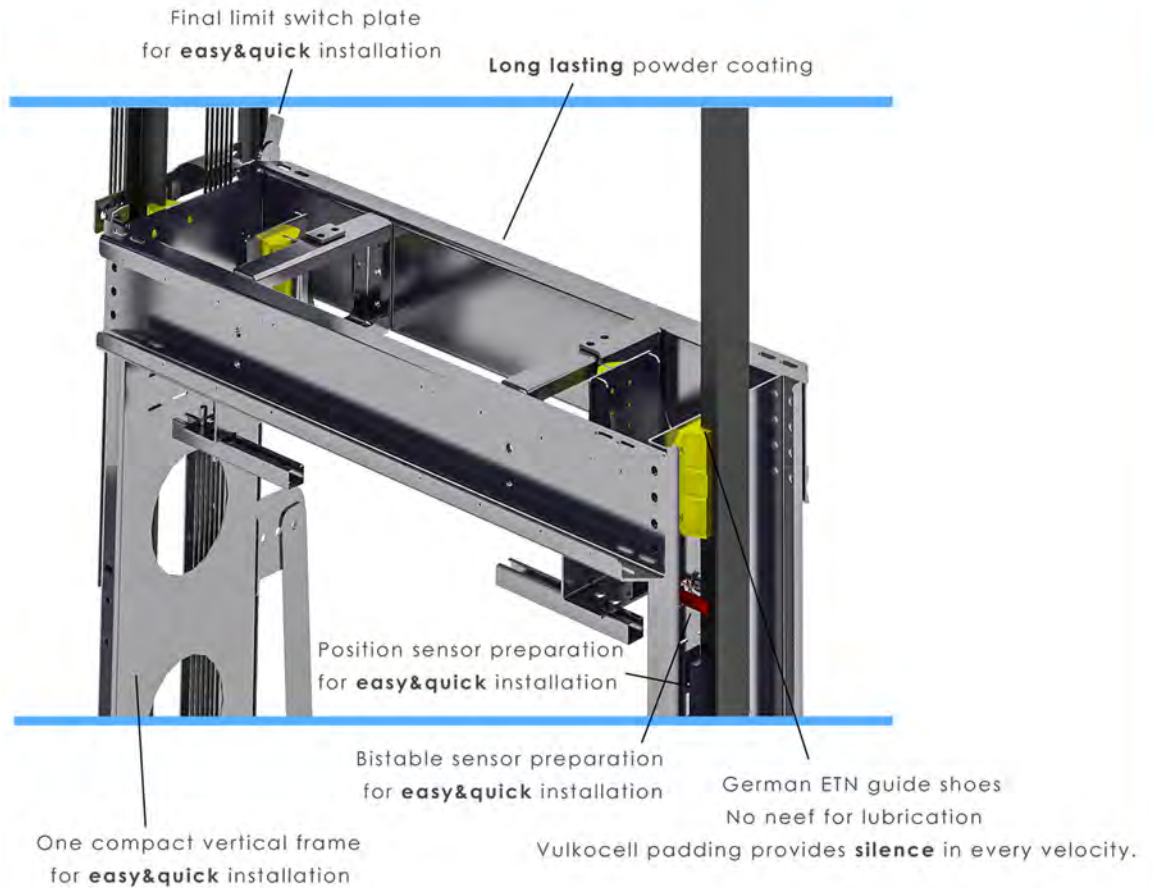
**G type Cabin Frame
Pulleys at Bottom**



**EN 81-20/EN 81-50
EN 81-21/EN 81-28
EN 81-70**

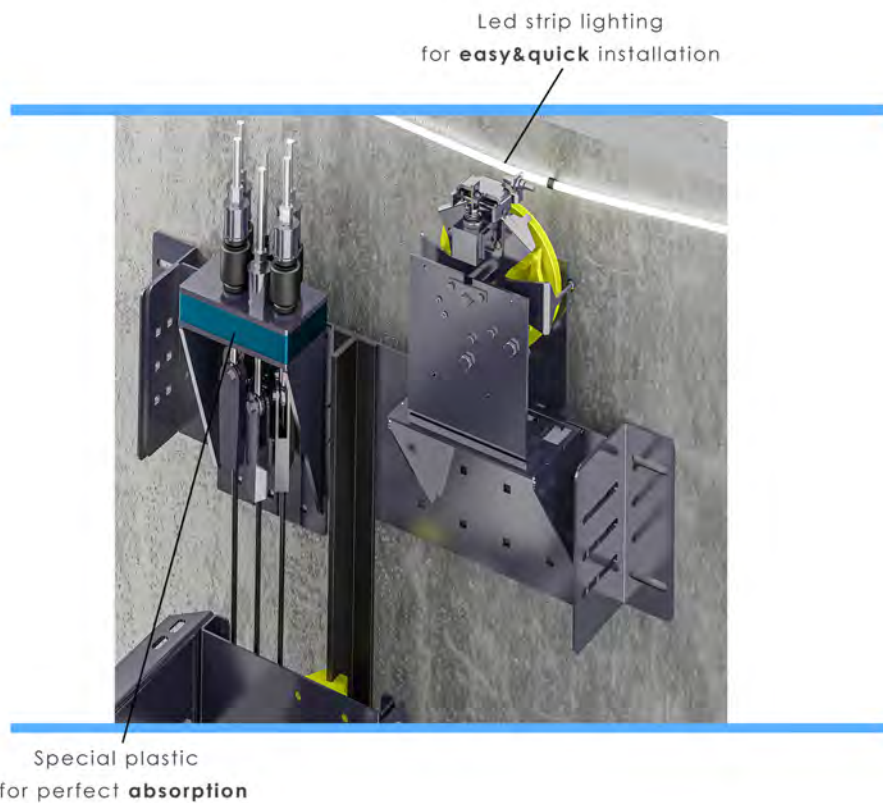
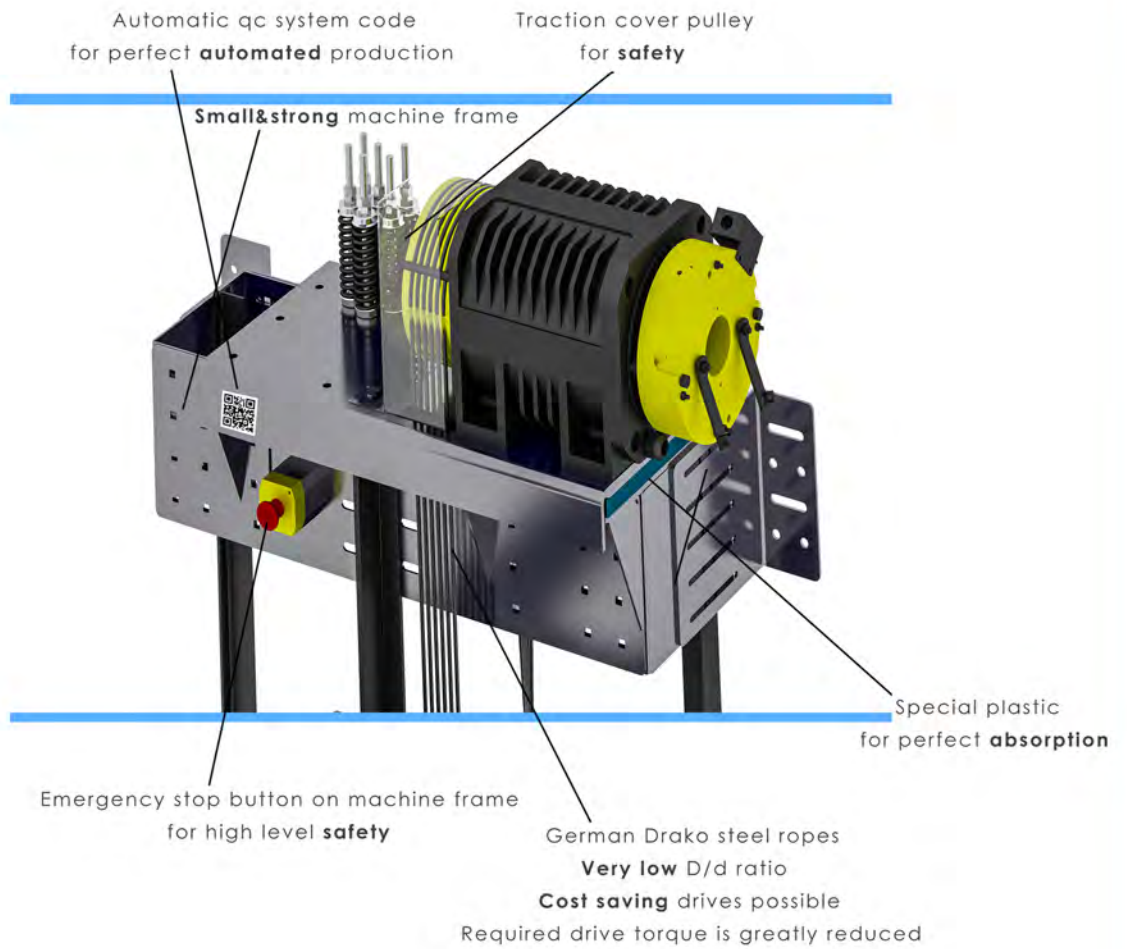
MODEL 1000

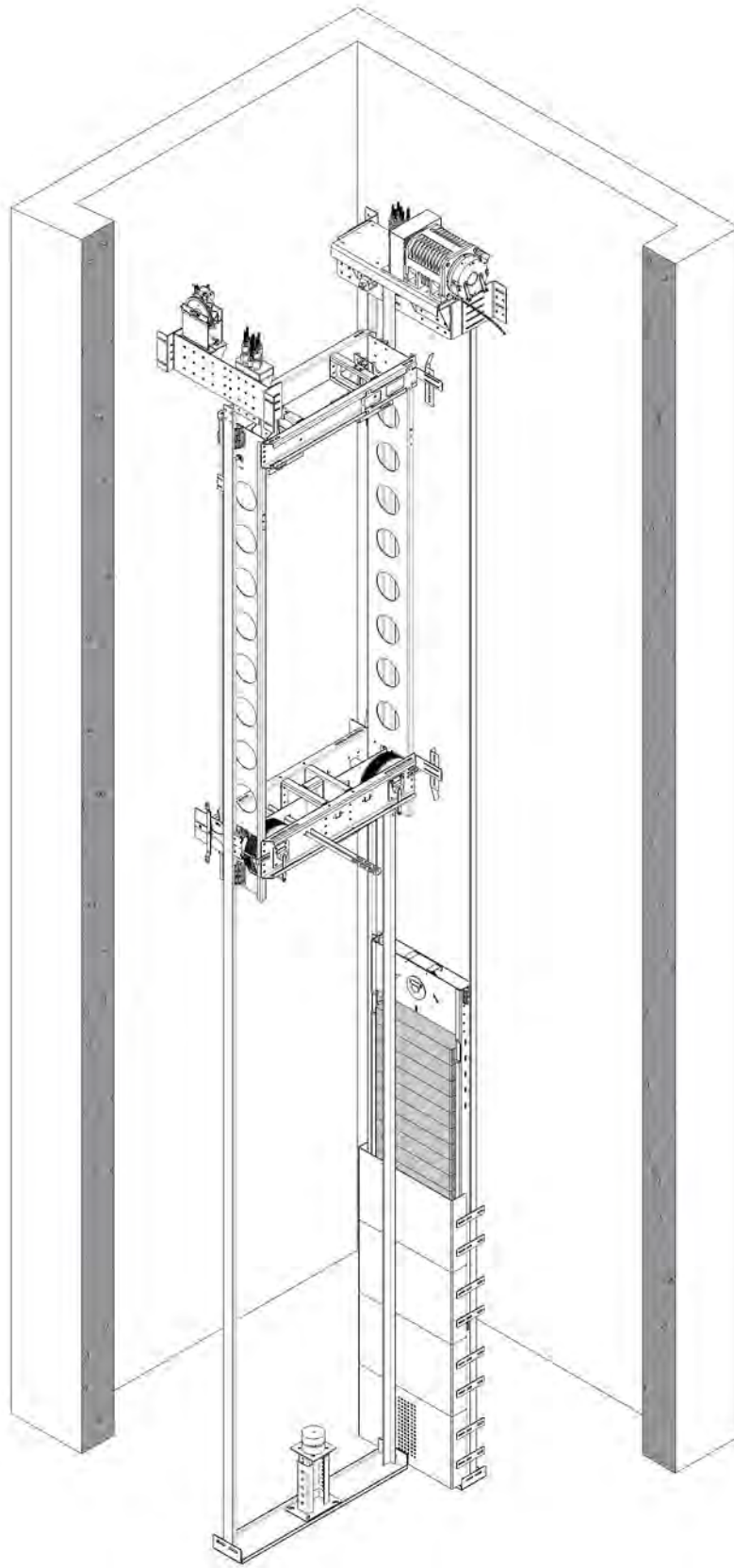
Features

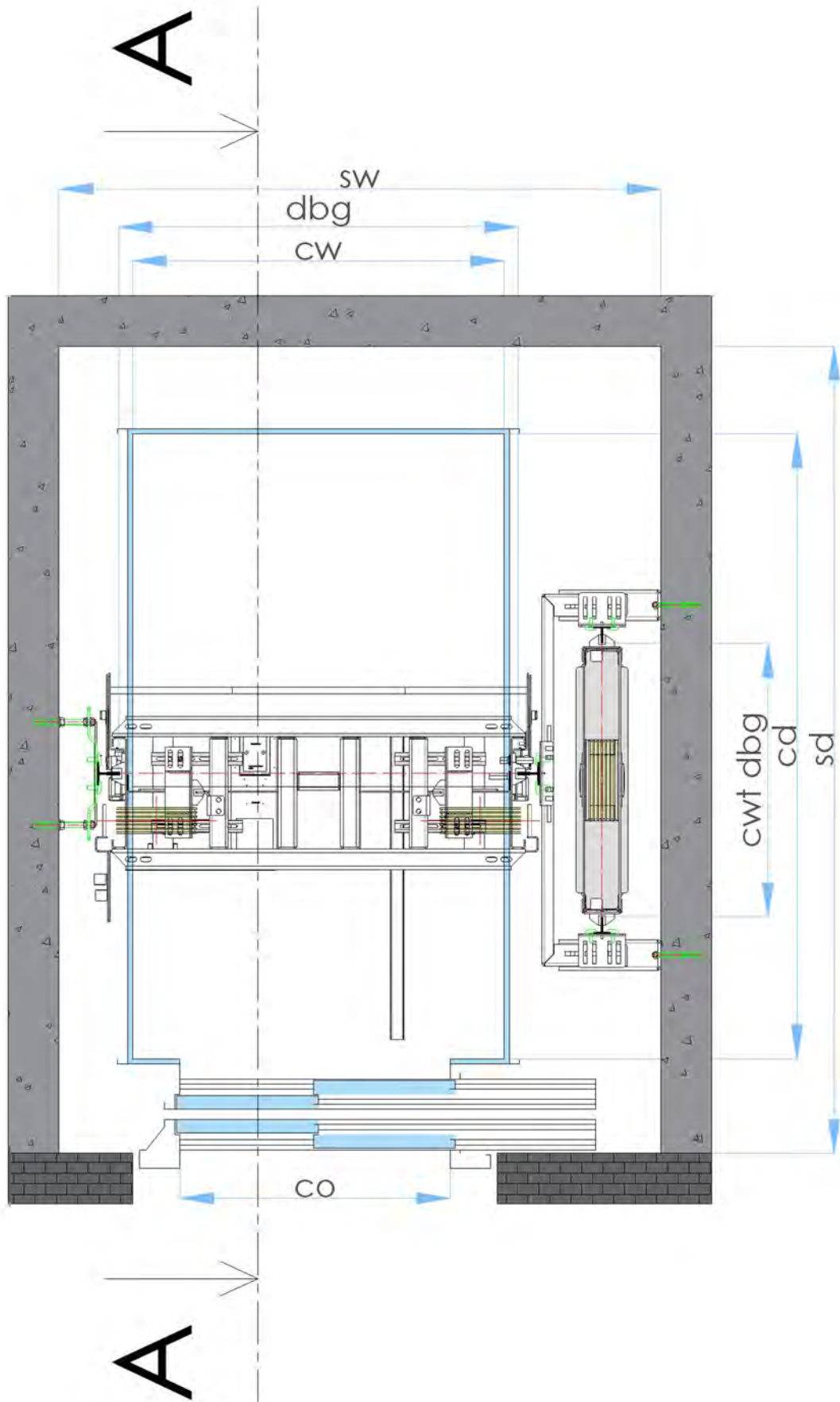


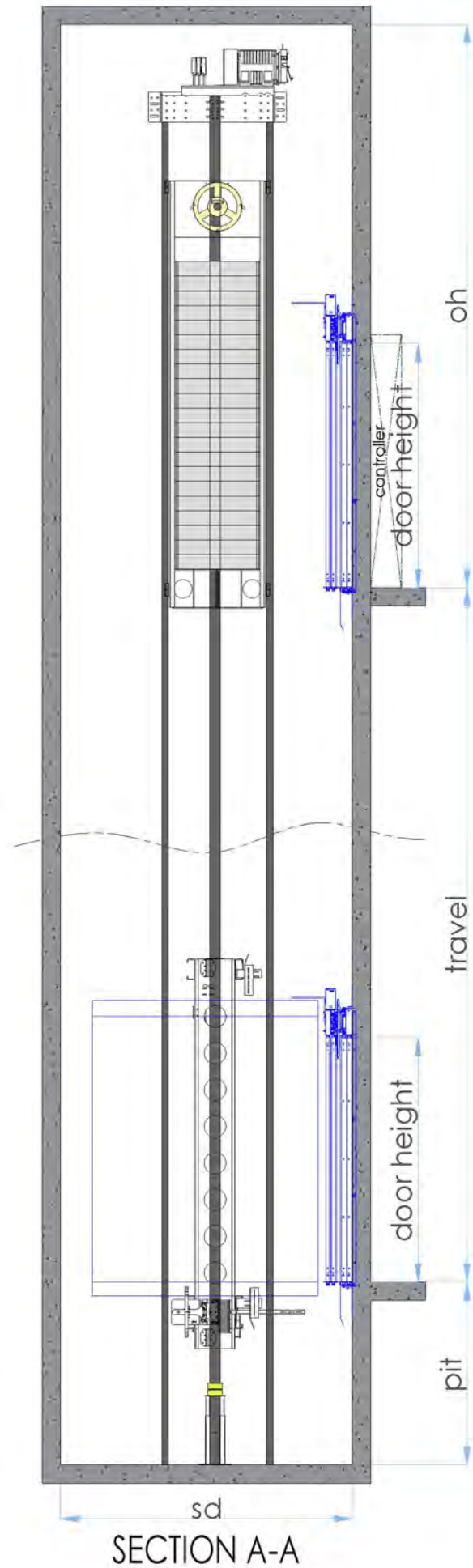
MODEL 1000

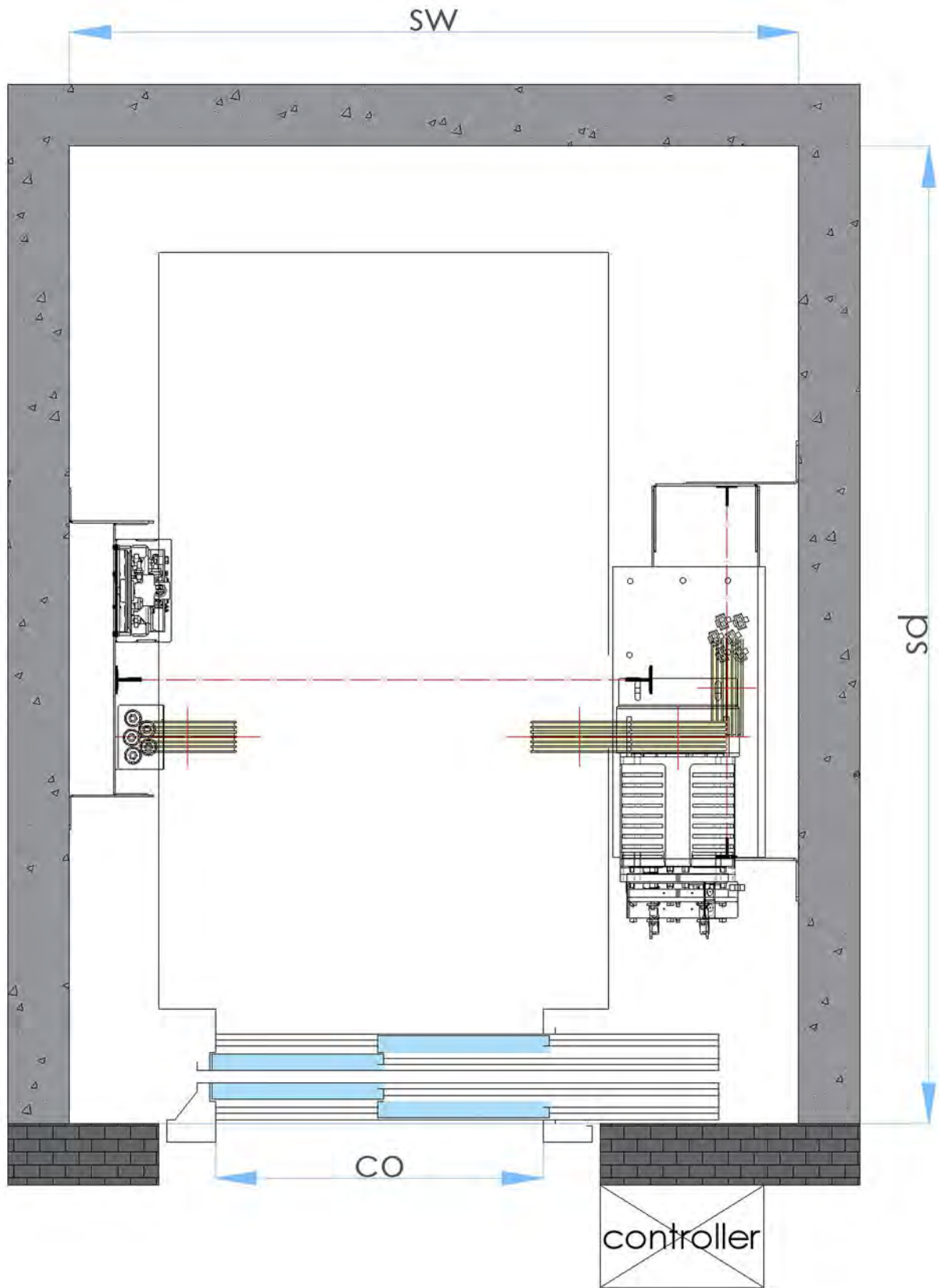
Features











MODEL 1000

Technical Tables
1 m/s | Dimensions

capacity	320 kg	400 kg	450 kg	630 kg	800 kg
no of passengers	4	5	6	8	10
roping	2:1	2:1	2:1	2:1	2:1
total load, P+Q [kg]	960	1100	1225	1415	1650
max. car area [m ²]	0,9	1,17	1,3	1,66	2
min. car area [m ²]	0,79	0,98	1,17	1,45	1,73
shaft width [mm]	1450	1500	1500	1600	1850
shaft depth [mm]	1550	1550	1550	1800	1800
minimum pit depth (mm) EN81-20	1050	1050	1050	1050	1050
minimum headroom (mm) EN81-20	3400	3400	3400	3400	3400
minimum pit depth (mm) EN81-21	600	600	600	600	600
minimum headroom (mm) EN81-21	2800	2800	2800	2800	2800
car width [mm]	900	1000	1000	1100	1350
car depth [mm]	1000	1100	1200	1400	1400
car internal height [mm]	2115	2115	2115	2115	2115
door type	2P side opening	2P side opening	2P side opening	2P side opening	2P side opening
door width [mm]	800	800	800	900	900
door height [mm]	2000	2000	2000	2000	2000
door total length [mm]	1250	1250	1250	1400	1400
car frame DBG [mm]	990	1090	1090	1190	1440
brace rods					

capacity	1000 kg	1275kg	1600kg	2000kg
no of passengers	13	17	20	26
roping	2:1	2:1	2:1	2:1
total load, P+Q [kg]	2000	2325	2750	3500
max. car area [m ²]	2,4	2,9	3,56	4,2
min. car area [m ²]	2,15	2,57	3,13	3,705
shaft width [mm]	1900	1900	2225	2300
shaft depth [mm]	2000	2685	2785	3085
minimum pit depth (mm) EN81-20	1050	1050	1050	1050
minimum headroom (mm) EN81-20	3400	3500	3900	3900
minimum pit depth (mm) EN81-21	600	700	700	700
minimum headroom (mm) EN81-21	2800	2900	2900	2900
car width [mm]	1400	1200	1400	1500
car depth [mm]	1600	2300	2400	2700
car internal height [mm]	2115	2200	2200	2200
door type	2P side opening	2P side opening	2P side opening	2P side opening
door width [mm]	900	1000	1300	1300
door height [mm]	2000	2100	2100	2100
door total length [mm]	1400	1550	2000	2000
car frame DBG [mm]	1490	1290	1490	1590
brace rods		available	available	available

MODEL 1000

Technical Tables
1 m/s | Motor&Inverter

capacity	320 kg	400 kg	450 kg	630 kg	800 kg
motor model	AK1	AK1	AK2	AK2	AK2
motor power [kW]	2	2,4	2,9	3,9	4,9
nominal current [A] for 380V	5,2	6,5	7,8	10,2	13
inverter model for 380V	14 A	14 A	14 A	14 A	14 A
motor static load [kg]	7000	7000	7000	7000	7000
traction sheave [mm]	210	210	210	210	210
no of ropes	3	3	4	7	8
dia of ropes [mm]	6,5	6,5	6,5	6,5	6,5
rope composition	8*19 warrington	8*19 warrington	8*19 warrington	8*19 warrington	8*19 warrington
min. breaking load of ropes [N]	31500	31500	31500	31500	31500
rope unit weight [kg/m]	0,173	0,173	0,173	0,173	0,173

capacity	1000 kg	1275kg	1600kg	2000kg
motor model	AK3	AK5	AK6	AK2-5
motor power [kW]	6,1	7,8	9,8	12,2
nominal current [A] for 380V	16,3	23,7	29,7	35,1
inverter model for 380V	17 A	26 A	35 A	35 A
motor static load [kg]	7000	10000	10000	10000
traction sheave [mm]	210	320	320	320
no of ropes	9	7	8	12
dia of ropes [mm]	6,5	8	8	8
rope composition	8*19 warrington	8*19 warrington	8*19 warrington	8*19 warrington
min. breaking load of ropes [N]	31500	43300	43300	43300
rope unit weight [kg/m]	0,173	0,271	0,271	0,271

MODEL 1000

Technical Tables
1 m/s | Safety Components

capacity	320 kg	400 kg	450 kg	630 kg	800 kg
safety gear model	PRO 2000	PRO 2000	PRO 2000	PRO 2000	PRO 2000
safety gear P+Q [kg]	2400	2400	2400	2400	2400
buffer model	EYL-1	EYL-1	EYL-1	EYL-1	EYL-1
buffer P+Q [kg]	2250	2250	2250	2250	2250
OSG model	MOMENT 250 MRL 100	MOMENT 250 MRL 100	MOMENT 250 MRL 100	MOMENT 250 MRL 100	MOMENT 250 MRL 100
dia of OSG pulley [mm]	250	250	250	250	250
tripping speed [m/s]	1,4	1,4	1,4	1,4	1,4
tension pulley model	MOMENT 250 SPRING	MOMENT 250 SPRING	MOMENT 250 SPRING	MOMENT 250 SPRING	MOMENT 250 SPRING
dia of tension pulley [mm]	230	230	230	230	230
dia of OSG rope [mm]	6	6	6	6	6
OSG rope composition	6*19 Seale	6*19 Seale	6*19 Seale	6*19 Seale	6*19 Seale
Tmin of OSG rope [N]	21300	21300	21300	21300	21300

capacity	1000 kg	1275kg	1600kg	2000kg
safety gear model	PRO 2000	PRO 2000	PRO 2000S	PRO 2000S
safety gear P+Q [kg]	2400	2400	4000	4000
buffer model	EYL-1	EYL-1x2	EYL-1x2	EYL-1x2
buffer P+Q [kg]	2250	2250	2250	2250
OSG model	MOMENT 250 MRL 100	MOMENT 250 MRL 100	MOMENT 250 MRL 100	MOMENT 250 MRL 100
dia of OSG pulley [mm]	250	250	250	250
tripping speed [m/s]	1,4	1,4	1,4	1,4
tension pulley model	MOMENT 250 SPRING	MOMENT 250 SPRING	MOMENT 250 SPRING	MOMENT 250 SPRING
dia of tension pulley [mm]	230	230	230	230
dia of OSG rope [mm]	6	6	6	6
OSG rope composition	6*19 Seale	6*19 Seale	6*19 Seale	6*19 Seale
Tmin of OSG rope [N]	21300	21300	21300	21300

MODEL 1000

Technical Tables
1.6 m/s | Dimensions

capacity	320 kg	400 kg	450 kg	630 kg	800 kg
no of passengers	4	5	6	8	10
roping	2:1	2:1	2:1	2:1	2:1
total load, P+Q [kg]	960	1100	1225	1415	1650
max. car area [m ²]	0,9	1,17	1,3	1,66	2
min. car area [m ²]	0,79	0,98	1,17	1,45	1,73
shaft width [mm]	1450	1500	1500	1600	1850
shaft depth [mm]	1550	1550	1550	1800	1800
minimum pit depth (mm) EN81-20	1150	1150	1150	1150	1150
minimum headroom (mm) EN81-20	3554,6	3554,6	3554,6	3554,6	3554,6
minimum pit depth (mm) EN81-21	970	970	970	970	970
minimum headroom (mm) EN81-21	3000	3000	3000	3000	3000
car width [mm]	900	1000	1000	1100	1350
car depth [mm]	1000	1100	1200	1400	1400
car internal height [mm]	2115	2115	2115	2115	2115
door type	2P side opening	2P side opening	2P side opening	2P side opening	2P side opening
door width [mm]	800	800	800	900	900
door height [mm]	2000	2000	2000	2000	2000
door total length [mm]	1250	1250	1250	1400	1400
car frame DBG [mm]	990	1090	1090	1190	1440
brace rods					

capacity	1000 kg	1275kg	1600kg	2000kg
no of passengers	13	17	20	26
roping	2:1	2:1	2:1	2:1
total load, P+Q [kg]	2000	2325	2750	3500
max. car area [m ²]	2,4	2,9	3,56	4,2
min. car area [m ²]	2,15	2,57	3,13	3,705
shaft width [mm]	1900	1900	2225	2300
shaft depth [mm]	2000	2685	2785	3085
minimum pit depth (mm) EN81-20	1150	1150	1150	1150
minimum headroom (mm) EN81-20	3554,6	3639,6	4039,6	4039,6
minimum pit depth (mm) EN81-21	970	970	1040	1040
minimum headroom (mm) EN81-21	3000	3100	3100	3100
car width [mm]	1400	1200	1400	1500
car depth [mm]	1600	2300	2400	2700
car internal height [mm]	2115	2200	2200	2200
door type	2P side opening	2P side opening	2P side opening	2P side opening
door width [mm]	900	1100	1300	1300
door height [mm]	2000	2100	2100	2100
door total length [mm]	1400	1700	2000	2000
car frame DBG [mm]	1490	1290	1490	1590
brace rods		Available	Available	Available

MODEL 1000

Technical Tables
1.6 m/s | Motor&Inverter

capacity	320 kg	400 kg	450 kg	630 kg	800 kg
motor model	AK1	AK1	AK2	AK2	AK2
motor power [kW]	3,1	3,9	4,7	6,2	7,8
nominal current [A] for 380V	7,8	9,8	11,8	15,4	19,6
inverter model for 380V	14 A	14 A	14 A	17 A	26 A
motor static load [kg]	7000	7000	7000	7000	7000
traction sheave [mm]	210	210	210	210	210
no of ropes	3	3	4	7	8
dia of ropes [mm]	6,5	6,5	6,5	6,5	6,5
rope composition	8*19 warrington	8*19 warrington	8*19 warrington	8*19 warrington	8*19 warrington
min. breaking load of ropes [N]	31500	31500	31500	31500	31500
rope unit weight [kg/m]	0,173	0,173	0,173	0,173	0,173

capacity	1000 kg	1275kg	1600kg	2000kg
motor model	AK3	AK5	AK6	AK2-5
motor power [kW]	9,8	12,5	15,7	19,6
nominal current [A] for 380V	24,5	33,2	41,6	49,1
inverter model for 380V	26 A	35 A	50 A	50 A
motor static load [kg]	7000	10000	10000	10000
traction sheave [mm]	210	320	320	320
no of ropes	9	7	8	12
dia of ropes [mm]	6,5	8	8	8
rope composition	8*19 warrington	8*19 warrington	8*19 warrington	8*19 warrington
min. breaking load of ropes [N]	31500	43300	43300	43300
rope unit weight [kg/m]	0,173	0,271	0,271	0,271

MODEL 1000

Technical Tables
1.6 m/s | Safety Components

capacity	320 kg	400 kg	450 kg	630 kg	800 kg
safety gear model	PRO 2000	PRO 2000	PRO 2000	PRO 2000	PRO 2000
safety gear P+Q [kg]	2000	2000	2000	2000	2000
buffer model	HT16-102	HT16-102	HT16-102	HT16-102	HT16-102
buffer P+Q [kg]	2145	2145	2145	2145	2145
OSG model	MOMENT 250 MRL 160	MOMENT 250 MRL 160	MOMENT 250 MRL 160	MOMENT 250 MRL 160	MOMENT 250 MRL 160
dia of OSG pulley [mm]	250	250	250	250	250
tripping speed [m/s]	2,24	2,24	2,24	2,24	2,24
tension pulley model	MOMENT 250 SPRING	MOMENT 250 SPRING	MOMENT 250 SPRING	MOMENT 250 SPRING	MOMENT 250 SPRING
dia of tension pulley [mm]	230	230	230	230	230
dia of OSG rope [mm]	6	6	6	6	6
OSG rope composition	6*19 Seale	6*19 Seale	6*19 Seale	6*19 Seale	6*19 Seale
Tmin of OSG rope [N]	21300	21300	21300	21300	21300

capacity	1000 kg	1275kg	1600kg	2000kg
safety gear model	PRO 2000	PRO 2000S	PRO5000	PRO5000
safety gear P+Q [kg]	2000	2650	3400	3400
buffer model	HT16-102	HT16-102x2	HT16-102x2	HT16-102x2
buffer P+Q [kg]	2145	2145	2145	2145
OSG model	MOMENT 250 MRL 160	MOMENT 250 MRL 160	MOMENT 250 MRL 160	MOMENT 250 MRL 160
dia of OSG pulley [mm]	250	250	250	250
tripping speed [m/s]	2,24	2,24	2,24	2,24
tension pulley model	MOMENT 250 SPRING	MOMENT 250 SPRING	MOMENT 250 SPRING	MOMENT 250 SPRING
dia of tension pulley [mm]	230	230	230	230
dia of OSG rope [mm]	6	6	6	6
OSG rope composition	6*19 Seale	6*19 Seale	6*19 Seale	6*19 Seale
Tmin of OSG rope [N]	21300	21300	21300	21300