

MODEL 1040

Features



Machine Roomless



Gearless



4000-8000 kg



0,3 - 1,0 m/s



30 m



4:1



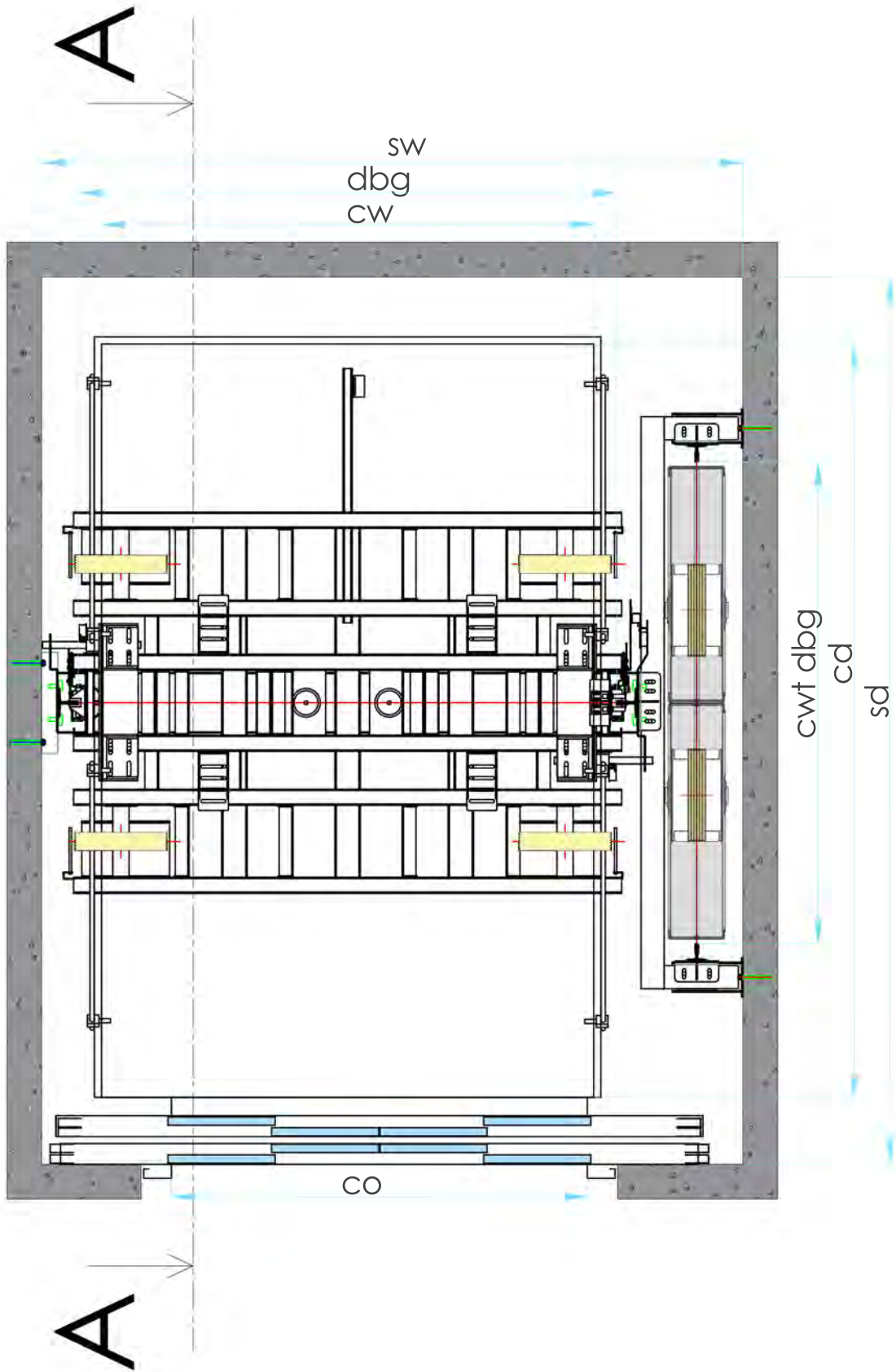
**Single or 180°
Double Entrance**



**G type Cabin Frame
Pulleys at Bottom**

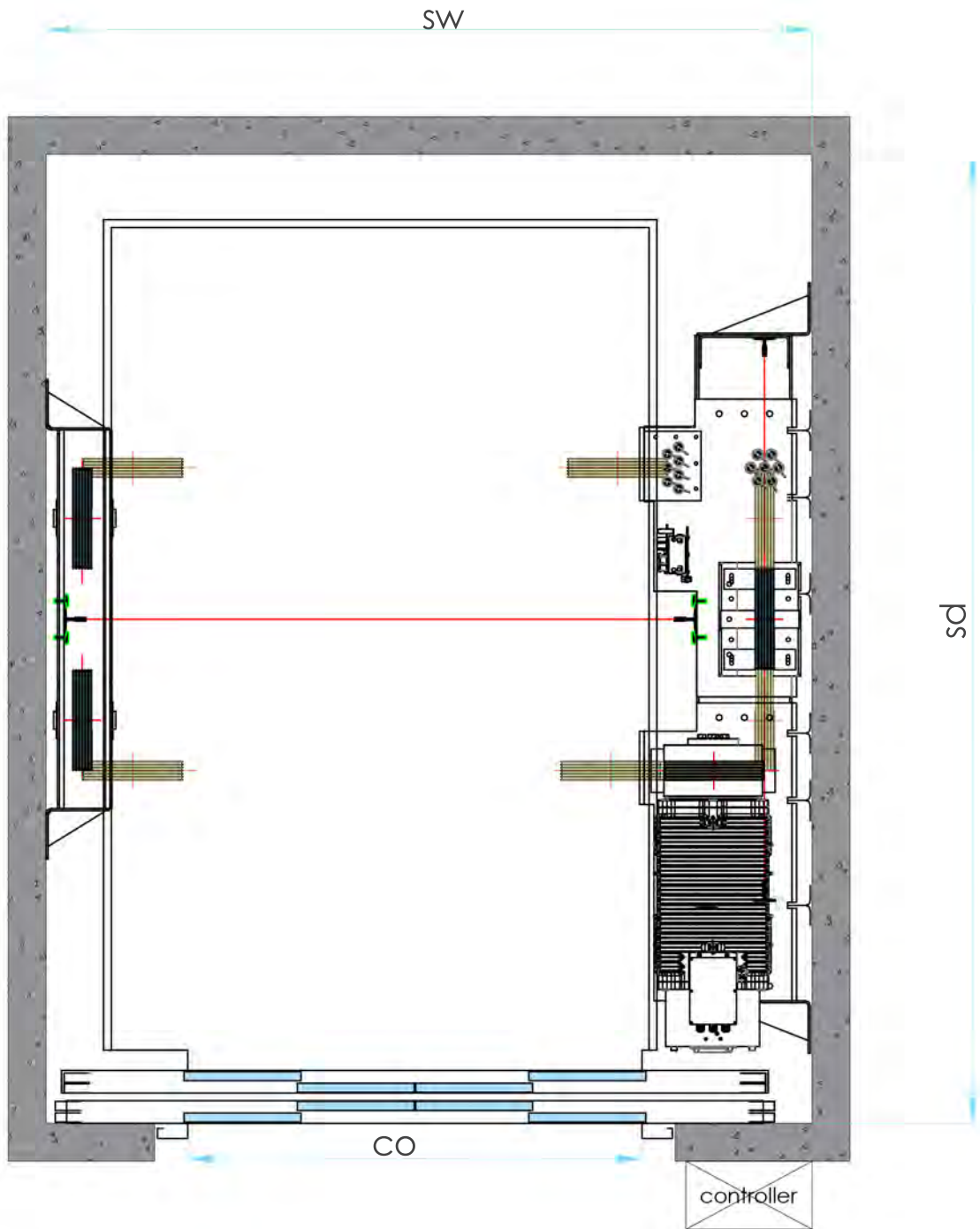


**EN 81-20/EN 81-50
EN81-21/EN 81-28**



MODEL 1040

Last Floor Top Plan



MODEL 1040

Technical Tables
0,3 m/s - 1.0 m/s

Dimensions

capacity	4000	6500	8000
roping	4:1	4:1	4:1
total load, P+Q [kg]	7500	10000	12000
max. car area [m ²]	7,4	11,4	13,8
min. car area [m ²]	6,925	10,80	13,02
shaft width [mm]	3100	3600	3600
shaft depth [mm]	3800	4550	5550
minimum pit depth (mm) EN81-20	*	*	*
minimum headroom (mm) EN81-20	*	*	*
minimum pit depth (mm) EN81-21	*	*	*
minimum headroom (mm) EN81-21	*	*	*
car width [mm]	2100	2600	2600
car depth [mm]	3250	4000	5000
car internal height [mm]	2300	2300	2300
door type	4P central	4P central	4P central
door width [mm]	1800	1800	1800
door height [mm]	2200	2200	2200
door total length [mm]	2850	2850	2850
car frame DBG [mm]	2300	2800	2800
brace rods	available	available	available

Motor & Inverter

capacity	4000	6500	8000
motor model	SMT 250AC-30	SMT 250AC-50	SMT 250AC-50
motor power [kW]	17	33	23
nominal current [A] for 380V	39	65	65
inverter model for 380V	50 A	75 A	75 A
motor static load [kg]	13000	13000	13000
traction sheave [mm]	400	400	400
no of ropes	7	10	10
dia of ropes [mm]	10	10	10
rope composition	8*19 warrington	8*19 warrington	8*19 warrington
min. breaking load of ropes [N]	67700	67700	67700
rope unit weight [kg/m]	0,423	0,423	0,423

Safety Components

capacity	4000	6500	8000
safety gear model	ASG-120UD tandem	ASG-120UD double tandem	ASG-120UD double tandem
safety gear P+Q [kg]	8466	16932	16932
buffer model	EYL-1x4	EYL-1x5	EYL-1x6
buffer P+Q [kg]	2250	2250	2250
OSG model	MOMENT 250 MRL	MOMENT 250 MRL	MOMENT 250 MRL
dia of OSG pulley [mm]	250	250	250
tension pulley model	MOMENT 250 with weight	MOMENT 250 with weight	MOMENT 250 with weight
dia of tension pulley [mm]	230	230	230
dia of OSG rope [mm]	6	6	6
OSG rope composition	6*19 Seale	6*19 Seale	6*19 Seale
Tmin of OSG rope [N]	21300	21300	21300